



# 电磁炉电容器 平滑滤波系列

## INDUCTION COOKER SMOOTHING FILTER SERIES

# MKP

采用耐高温聚丙烯薄膜介质，加厚型金属化电极，大电流全检测试，全自动化生产，具有一致性好，稳定性高等特点。

专用于电磁炉等感应加热装置的平滑滤波电路。

The products are made of temperature-resistant metallized polypropylene film, thickened metallized electrode, heavy current full inspection testing, full automatic production. They have characteristics of good uniformity, high stability and so on. Specifically used in smooth filter circuit of induction cooker and other induction heating equipment.



引用标准 Reference standard GB/T14472、IEC60384-14、UL1283

气候类别 Climatic category 40 / 105 / 21

额定电压 Rated voltage 150VAC、400VDC (275VAC)

容量范围 Capacitance range  $3\mu\text{F} \sim 15\mu\text{F}$

容量偏差 Capacitance tolerance  $\pm 5\%(\text{J})$ 、 $\pm 10\%(\text{K})$

耐电压 Voltage proof

极间 between terminals  $1.8 \cdot U_R / 60\text{s}$

极壳 between terminals and case  $2 \cdot U_R + 1000(\text{VAC}) / 60\text{s} (\geq 2000\text{VAC})$

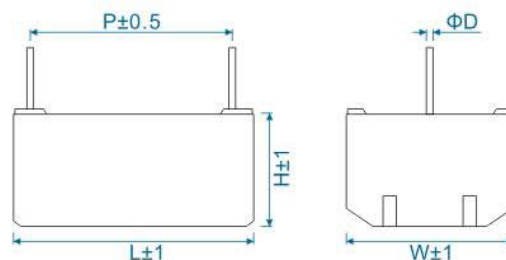
绝缘电阻 Insulation resistance(20°C)

极间 between terminals  $\geq 5000\text{S}$  (100Vdc, 60s)

极壳 between terminals and case  $\geq 30000\text{M}\Omega$  (100Vdc, 60s)

损耗角正切 Tangent of loss angle(20°C)  $\leq 0.001$  (1KHz)

电压爬升率 Pulse rise time(dv/dt) 30V/ $\mu\text{s}$  Max



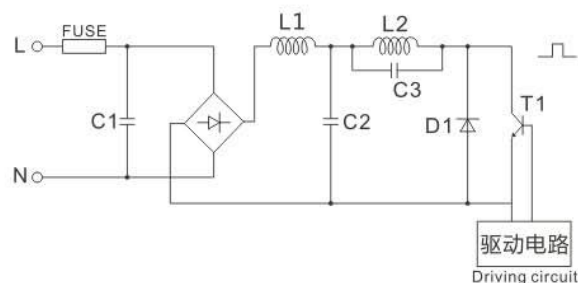
### 常用规格 Dimension

Unit : mm

Rated cap.	400VDC(275VAC)				
	L	W	H	P	ΦD
4.0μF	36	22	17	31	1.0
4.0μF	36	14	25	31	1.0
5.0μF	36	25	18	31	1.0
5.0μF	36	17	25	31	1.0
6.0μF	36	26	21	31	1.0
6.0μF	36	17.5	29	31	1.0
6.8μF	36	26	21	31	1.0
8.0μF	36	30	22	31	1.0
10.0μF	36	26	21	31	1.0
12.0μF	36	19.5	32	31	1.0
15.0μF	46	23.5	38	41	1.0

### 典型线路图

Typical circuit



C2:滤波电容  
Filter capacitor